



COCKLE BAY SCHOOL

STRIVE ON  
Mahi Kaha



Children and their learning at the heart of all we do  
Ko ngā tamariki me a rātou ako kei te ngākau o ngā mihi

## From the desk of Mrs Bigwood - 20 May 2026



## Term Dates

**Friday 29 May:** Teacher Only Day (school closed)

**Thursday 2 July:** End of Term 2, finish at 3:00pm

**Friday 3 July:** Teacher Only Day (school closed)

**Monday 20 July:** Term 3 Starts

## Term 2 - Important Dates

**Friday 22 May:** HPPA Rugby

**Monday 25 - Wednesday 27 May:** Education Review Officers (ERO) at Cockle Bay School

**Wednesday 27 May:** HPPA Girls' Soccer

**Friday 29 May:** Teacher Only Day (school closed)

**Monday 1 June:** Kings Birthday (school closed)

**Tuesday 2 June:** Whānau Hui

**Wednesday 3 June:** HPPA Hockey

**Friday 5 June:** HPPA Rugby Interschool

**Wednesday 10 June:** HPPA Rugby League

**Friday 12 June:** HPPA Rugby Interschool

**Tuesday 16, Wednesday 17 & Thursday 18 June:** Takahē Player 6 Maritime Museum Trip

**Monday 22 June - Eco Warriors Interschool Planting Day**

**Wednesday 24 + Thursday 25 June:** HPPA competitive soccer days

**Thursday 2 July:** Last day of Term 2

**Friday 3 July:** Teacher Only Day (school closed)

Kia ora koutou Parents and Whānau

We hope you and your children are having a fantastic term so far! Cockle Bay School is always a busy place with lots going on. We have had children going to National Young Leaders' Day and Barbarians Fun Rugby Day, Auckland Rugby at school this week, Louise Dempsey and Writing professional development in classes, trips to Kelly Tarlton's, and of course an action packed Book Week and fabulous Character Parade. There is more coming up, so please check our school calendar and dates below.

We want to take a moment to update you on how PB4L (Positive Behaviour for Learning) is being implemented at Cockle Bay School and the focus areas we have covered so far this year.

Each week, we hold a PB4L assembly where we introduce and reinforce key behavioural expectations that reflect our school values and culture. Teachers then follow up in classrooms with explicit teaching and discussions about these behaviours, ensuring that students understand and can apply them in their daily school life. We celebrate students showing exemplary behaviours through PB4L certificates awarded at assembly, and use Mahi Pai for 'on the spot' recognition.

Alongside our schoolwide PB4L expectations, teachers have been reviewing behaviour data and discussing the key expectations that may need revisiting or strengthening within each team.

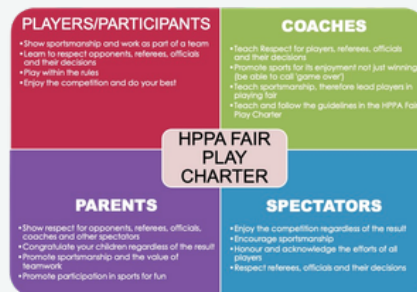
### This week's foci were:

- Kiwi/Kea – Using playground equipment appropriately and safely
- Tūi – Lunch eating expectations
- Weka – Emotional regulation – "What can we do?" when we experience big feelings
- Kōtuku – Lunch eating expectations and transitioning calmly back to class
- Kākāpō – Celebrating successes and recognising achievements
- Takahē – Using kind words and understanding how words impact others

Next week, our schoolwide PB4L focus will be the HPPA Fair Play Charter. Students will be learning about fair play in sports and games, including teamwork, sportsmanship, respect, inclusion, and playing within the rules.

Whānau can help reinforce these expectations at home by having conversations about what fair play looks and sounds like, encouraging children to use respectful language, practise good sportsmanship, and talk about ways to manage emotions positively when things do not go their way. Thank you for your ongoing support in helping us build a positive and respectful school community.

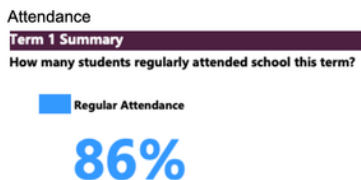
Ngā mihi nui  
Dorothy Bigwood



## ATTENDANCE MATTERS

This improvement from 79% in term 4 is fantastic and is a real celebration of our community's commitment to the importance of their children's education and social development. As well, 96% of students are arriving on time regularly.

At Cockle Bay School the main reasons given for absences are illness and medical absences. The next main reason is holidays. Please be aware that the Ministry of Education advises that holidays during term time are not acceptable. I understand that connecting with relatives overseas can be very important to families, but ask you to plan other holidays for school breaks if at all possible.



## Team Assemblies - Principal's Awards

- Friday 22 May: Junior assembly (Tūi Team)
- Friday 29 May: No assembly (Teacher Only Day)
- Friday 5 June: Senior Assembly (Kōtuku Team)
- Friday 12 June: Junior assembly (Kea Team: Rms 27, 28, 29)
- Friday 19 June: Senior Assembly (Kākāpō Team)
- Friday 26 June: Junior assembly (Kea + Kiwi Team: Rms 26, 30, 31)
- Friday 2 July: no assembly (Teacher Only Day)

### Safety at the school Gates:

Your co-operation with the points below will be appreciated. Howick College entrances (back gate or front) cannot be used by our drivers to drop off/collect Cockle Bay students. There is a safety risk to Cockle Bay School children/families 'cutting through' the Howick College grounds. Their students are big and they move quickly around corners. The risk became apparent during a recent fire alarm after school. You are advised it is wisest to use the roads. Parking at the local Cockle Bay shops is for their customers only, so drivers are asked not to use it for drop offs/collects. Please follow the road code rules around the school e.g. parking limits, u-turns, parking over driveways and on yellow dotted lines. Children are endangered by double parking inside the white line on Sandspit Rd, and by crossing the footpath to park on grass verges.

**Vandalism**  
We have experienced recent vandalism:

- a small tyre burn on the new turf
- youths partying on the staffroom deck 1.15am and climbing down/breaking our signs
- barrier arm at reception damaged and not working

If you become aware, out of hours, of any antisocial behaviour likely to damage property, please contact the police as soon as possible. If you can get any identification, without putting yourself at risk, this would be useful.

### Education Review Office (ERO) Visit

The Education Review Office is the government agency that evaluates how well schools educate and care for children. They are visiting us next week and in due course their findings will be made available to us all.

### SchoolDocs Review

Parents are invited to review our policies for term 2: the swimming pool, education outside the classroom, risk assessment and management. To access our School policies and do a review, please go to School Docs (link on our website) and use the community usernames and password below:

Username: cocklebay  
Password: sandspit

As part of our emergency readiness, please send your child to school with one canned food item they would eat if they had to stay on site for a prolonged period. Choosing something that reflects your family's culture or preferences ensures our pantry covers a wide, inclusive range of foods. Please ensure the cans are in good condition - not out of date or rusty. Each year, before refreshing our collection, we donate these stored items to charity. Please drop off donations at the library to help us support both our students and the wider community!



FRIDAY 29TH MAY 2026  
COCKLE BAY SCHOOL

We will be running a full day programme from 7.00am - 6.00pm

Main Programme: 8.30am - 3.00pm \$42.00  
Before & Aftercare available

Join us for a day full of fun activities, games, crafts and sports!

To book, visit our website:  
[enrolmy.com/bizzy-bodz](http://enrolmy.com/bizzy-bodz)

Head Office: 09 530 9020 [admin@bizzybodz.co.nz](mailto:admin@bizzybodz.co.nz)

#### Payment/WINZ

- Payment is required at time of booking to be confirmed.
- WINZ forms need to be submitted when making your booking, a 25% deposit is required to secure your booking

#### How to book

**Booking with Enrolmy**  
We're excited to announce that our new Bizzy Bodz site is now live on Enrolmy: [enrolmy.com/bizzybodz](http://enrolmy.com/bizzybodz). Please visit the site to register your account and get started.

With our new booking system, you will need to:

- Add your child(ren)
- Complete a safety form (enrolment form) for each child
- Finalise your bookings

Location  
Based in the school hall  
7.30am - 6.00pm

Prices
7.30am - 8.30am \$8.00
8.30am - 3.00pm see over
3.00pm - 4.30pm \$10.00
3.00pm - 6.00pm \$14.00



#### Bookings

- Bookings can be made on or before the day of attendance however, please note, there are limited spaces available
- Drop off and pick up outside of booked hours will incur an extra fee
- Refunds are not available once the holiday period has begun, however day swaps can be made in advance by contacting the head office (subject to availability)

